

# The Alhambra



## Landscape makeover

Winter 2009  
Volume 1, Issue 6

**Inside this issue:**

*Stay in-the-know with our local events calendar* 2

*Tenant amenities available at The Alhambra* 3

*Help the environment by recycling your used or old batteries* 3



*What you should do to protect against stalkers* 3

*Introducing the new campus car wash service* 4

*Property management staff and contact information* 4

For years, an idea had been brewing to re-design the landscaping surrounding the A-11 Building at The Alhambra.



See Page 2 for renderings of the completed project.

While the rest of the campus is in close proximity to The Alhambra's Oval Mall Courtyard, those located in the northernmost A11 Building

often find the area too meandering.

The idea for a newly redesigned landscape finally took off in the summer of 2008, and construction began in mid-December.

Expected to be completed by the second week of February



Photo provided by EPT Design

**Construction for the re-designed landscape surrounding Building A11 began in mid-December 2008. The project is expected to complete this February.**

2009, the new landscape will give tenants around the A10 & A11 area their own piece of the Oval Mall, while still keeping with the overall master plan for the campus.

The A11 landscaping plan includes a handicap-accessible ramp outside the entrance of Building A10-North, as well as

*(Continued on Page 2)*

### TENANT PROFILE: TOTAL EDUCATION SOLUTIONS (TES)

## Non-profit addresses children's disorders

Total Education Solutions (TES) is pleased to announce the opening of our new clinic, located in The Alhambra, which brings us full circle to our roots in the City of Alhambra. Beginning in 1974, TES' founder, Dr. Nancy J. Lavelle, started

a special education school in a rented space on the corner of Main Street and Almansor Street. Today, the South Pasadena-based, nationally recognized, non-profit Institute for the Redesign of Learning, known in the community as The Almansor

For more info on TES, go to [www.tesidea.com](http://www.tesidea.com) or call (888) 4TES-KIDS.

Center, offers early education, mental

special education, health, transition and adult services, and community outreach services to over 3,000 children and adults from 35

communities in the San Gabriel Valley and Los Angeles areas.

TES' Alhambra Clinic is the latest TES effort to reach students with special needs who

*(Continued on Page 4)*

## CAMPUS UPDATES

**CONFERENCE ROOM INFO**  
Starting this year, the Banquet Room (Bldg. B1) & the Fireside Room (Bldg. B1) will not be available for rent.

## COMMUNITY EVENTS

### February

14  
**Family Day: Catching the Love Bug** at the Norton Simon Museum  
Celebrate a month of Valentines through artwork dealing with love, and craft your own amorous creature for someone who makes your heart sing.  
**Where:** Norton Simon Museum—411 W. Colorado Blvd., Pasadena  
**Time:** 1:00PM—2:30PM  
**Website:** [www.nortonsimon.org](http://www.nortonsimon.org)  
**Ph:** (626) 449-6840

21  
**Hidden Universe: LIVE!**  
Explore the life and death of cosmic objects through NASA's Spitzer Space Telescope based at Caltech. Robert Hurt of Caltech's Infrared Processing and Analysis Center introduces the film and guides the post-screening discussion.  
**Where:** Beckman Auditorium, Caltech—332 S. Michigan Ave., Pasadena  
**Time:** 2:00PM  
**Website:** [events.caltech.edu](http://events.caltech.edu)  
**Ph:** (626) 395-4652

22  
**Winter Classical Concert**  
**Where:** First Baptist Church of Alhambra—101 S. Atlantic Blvd., Alhambra  
**Time:** 3:00PM—5:00PM  
**Website:** [kingdom-causes.org/285014.ihtml](http://kingdom-causes.org/285014.ihtml)

Ongoing on Sunday Mornings  
**Alhambra Farmer's Market**  
**Where:** Monterey St., one block east of Garfield & one block south of Main St.  
**Time:** 8:00AM—1:00PM  
**Ph:** (626) 570-5081

Information taken from [www.cityofalhambra.org](http://www.cityofalhambra.org). For additional events, go to [www.cityofalhambra.org/government/parks\\_recreation/Parks/FamilyActivities.html](http://www.cityofalhambra.org/government/parks_recreation/Parks/FamilyActivities.html)



Photo provided by EPT Design

**Concept plan for the awning at the East entry of Building A11.**

## New Landscape

(Continued from Page 1)

a bicycle rack at the East entrance of Building A11.

New awnings will be added to building entries to give doorways scale, proportion and articulation.

Date palm trees will be added along the east side of the building to create a rhythmic line that melds into the architectural elements. The predominately blue-green colors of the landscaping will provide a striking contrast against the green, red and burgundy accents of the brick buildings.



Photo provided by EPT Design

**Date palm trees will be added along the east side of Building A11.**



Photo provided by EPT Design

**A similar camphor tree will be put in the "South Court" by A10 & A11.**

The landscaping of the building's "South Court," however, is what promises to become the "campus jewel." Through a combination of colors, textures and spatial relationships, the envisioned garden will be composed of a central seating area surrounded by cobble. Blue-green agaves, palms, shrubs and a new Camphor tree will all be added to give the space a "sense of enclosure and mystery."

On the North side of Building A11, a "Jurassic"

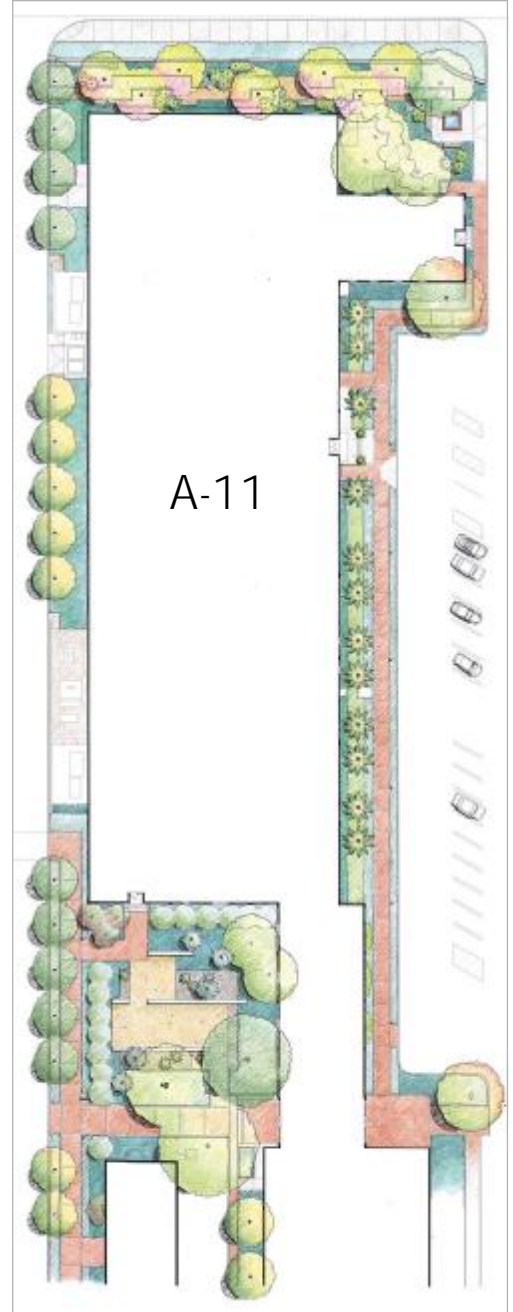


Photo provided by EPT Design

**Concept plan for the landscaping design around Building A11 and A10-North.**



Photo provided by EPT Design

**Floss Silk Trees will be added to the North "Jurassic" pathway.**

pathway will include a small court, fountain, and benches. A shaded, secluded garden will be composed of teak benches, a grove of exotic Floss Silk trees and a collection of ferns, cycads, and tree ferns.

- Information provided by EPT Design

# Protect yourself from possible stalkers

SANTA ANA, Calif. (January 23, 2009)

Nearly 10 percent of women and two percent of men in the U.S. have been stalked with an average risk of physical violence incidence of nearly 40%. Rosenfeld, B. "Violence Risk Factors in Stalking and Obsessional Harassment."

Stalkers with a prior intimate relationship are more likely to verbally intimidate and physically harm their victims than strangers, with the potential for violence four times higher than strangers.

The strongest risk factors for violence are: 1) threats and intimidation; 2) the existence of prior intimate relationships; and 3) substance abuse. The emotional damage of stalking and threats increases the prevalence of anxiety, insomnia, social dysfunction, and severe depression among vic-

tims.

Employers can, and have been, held responsible for protecting employees against stalkers and domestic violence, which can be costly in terms of liability and loss of productivity. Companies should establish policies for educating employees and anonymous reporting procedures to protect the privacy and safety of victims or potential victims.

If someone believes they are being stalked, they should take action, including:

1. Obtain a private Post Office (P.O.) Box for all mail, including magazine subscriptions and use the P.O. Box on your driver's license. Do not file a change of address with the U.S. Postal Service—notify friends, utilities and

others directly.

2. Set-up Google or other search engine alerts for your name to monitor online traffic. Remove any personal information online such as telephone number, address, etc.
3. Sign up for your state's address confidentiality program and obtain an unpublished and unlisted phone number. Avoid calling toll-free 800, 866, 888, 877 and 900 number services.
4. Don't list your name in an apartment building directory. Use a variation for visitors.
5. Be very protective of your Social Security number and alert the three credit bureaus--Experian, Equifax and Trans Union. Put a

fraud alert on your credit reports to avoid fraudulent access.

6. Make a police report and keep a log of every stalking incident. Save all communications for evidence. Do not edit or alter them in any way.
7. Consider getting professional counseling and/or seeking help from a victims support group.
8. If you are a victim of Cyber-stalking, act promptly and firmly to defuse the situation. Take potential threats seriously.
9. If you are receiving unwanted contact, make clear to that person that you would like him or her not to contact you again.

— Information provided by Universal Protection Services

## RECYCLING BATTERIES

Because batteries contain metals and/or other toxic, corrosive materials, they are considered hazardous waste and are illegal to toss out in California.

Rechargeable batteries can be recycled through the free

### Call2Recycle Program.

Go to [www.rbr.org](http://www.rbr.org) or call toll-free 877-2-RECYCLE and enter your zip code for a list of participating locations.

## FLIP THE SWITCH!

Do your part to help save electricity:

Turn off the lights and fans when you leave the room.

Lower the A/C or heater when you go to sleep.

## Cell Phones for Soldiers



Gocomics.typepad.com/.../09/cell-phones-for.html

Last April, The Alhambra joined the "Cell Phones for Soldiers" recycling program. An organization providing soldiers with calling cards, Cell Phones for Soldiers sells donated phones to a recycling company, and uses the profit to purchase one hour calling cards that are sent to troops stationed abroad.

Because of your support, we have been able to collect at least 100 cell phones and accessories since we began the program, but WE STILL NEED YOUR HELP!

Drop off your used or damaged cell phones at our Drop Box, located at the security desk on the first floor of Building A0, and Property Management will take care of the rest!

For additional information, please visit [www.cellphonesforsoldiers.com](http://www.cellphonesforsoldiers.com).

Get 10% off your dry-cleaning\* at

## XPRESS DRY CLEANERS

No coupons necessary

Applies to students & employees

\*Minimum 3 pieces to qualify.

Owner/Operator:

Kevin Bouboushian

Hours of Operation:

Mon-Thu, 8:00 a.m.—6:00 p.m.

Fri, 8:00 a.m.—5:00 p.m.

Location:

Building A10-South, First Floor, Room 10107

Call or email to schedule pick-up & drop-off!

Office: (626) 300-5470

Pick-up & Delivery: (626) 676-1968

E-mail: [Kevin@expressdrycleaners.com](mailto:Kevin@expressdrycleaners.com)

[www.expressdrycleaners.com](http://www.expressdrycleaners.com)

# TES offers services in five areas

(Continued from Page 1)

require specialized services such as speech and language therapy, occupational therapy, or behavioral support services. TES provides services to infants, toddlers, children and youth with language, learning, developmental, motor, behavioral and emotional challenges as well as children with Autism Spectrum Disorders.

Our clinic offers customized services in five areas:

**Speech and Language Therapy:** Specializing in the areas of bilingual language development, functional communication, and articulation, licensed and credentialed speech providers assess student needs, generate baseline and progress data, establish service plans, and work to achieve pre-determined goals to facilitate the improvement of communication abilities.

**Occupational Therapy:** By utilizing various treatment methodologies, including Sensory Integration (SI), Neurodevelopmental Treatment (NDT), and Motor Learning, licensed Occupational Therapists provide an array of occupational therapy services that address skills such as motor coordination, visual perception,



Photo provided by Total Education Solutions

**Utilizing various types of equipment, such as the ball pen (pictured), Occupational Therapy addresses common behaviors and skills, including motor coordination and self-regulation skills.**

handwriting, and neuromuscular function.

**Physical Therapy:** To facilitate enhanced function and independence, licensed physical therapy providers employ a range of techniques centered on play-based interventions in order to improve the endurance, balance, motor coordination, and mobility of a child.

**Intensive Academic Instruction:** To strengthen students' academic skills and allow for a positive school experience, credentialed Resource Specialists address students' needs and provide one-on-one and academic support. The program relies heavily on student

assessment (informal and formal) and progress reporting done by qualified and experienced Resource Specialists.

**Behavioral Support Services:** Supervised by a Board Certified Behavioral Analyst as well as Master's Level behavior intervention specialists, TES provides an array of behavior intervention services using a combination of approaches to address a student's target behaviors in order to form and strengthen replacement behaviors.

To learn more, please call (888) 4TES-KIDS.

—Information provided by TES



## THE ALHAMBRA TEAM

### Management Staff

Michael Taylor  
Senior Property Manager

June Butler  
Operations Manager

Ana Guardado  
Leasing Administrator

Andrew Yang  
Senior Accountant

Roz Hargrove  
Senior Property Accountant

Mina Lee  
Property Accountant

Courtney Taylor  
Administrative  
Property Assistant

Coral Lin  
Property Assistant

Marlene Contreras  
AP/AR Clerk

### Parking

Lisle Depaz  
Parking Facility Manager  
626-300-5070

### Security

Rolando Valdovinos  
Director of Security  
626-300-2211

### Janitorial

Manuel Gutierrez  
Janitorial Supervisor

### Engineering

Ed Millacci  
Chief Engineer

## New Car Wash: Mario's Auto Detail

Mario's Auto Detail, with 22 years of experience servicing class "A" buildings throughout downtown Los Angeles, Century City and Mid-Wilshire, is proud to announce its Grand Opening.

### RATES:

Car Wash: \$12

SUV Wash: \$15

Hand Wax:

Compact: \$40

SUV: \$55

Interior Detail:

Compact: \$55

SUV: \$75

Complete Detail:

Compact: \$125

SUV: \$155

On February 4, 2009, Mario's Auto Detail opened its newest location at The Alhambra, conveniently located near the Mission entrance. Now, you can enjoy the convenience of having your car washed or detailed while you work or go to school at very competitive prices.

For more information, call (310) 489-3701 or (310) 745-9210. Our business hours are Monday through Friday, 8:00 am until we finish with the last car. We recommend bringing your car during morning hours for better service.

We look forward to meeting you and remember, at Mario's Auto Detail, customer satisfaction is our specialty.



1000 South Fremont Ave.  
Bldg A10-Center, Ste 10150  
Alhambra, CA 91803

Phone: 626-300-5000  
Fax: 626-300-5025

[www.ratkovich.net](http://www.ratkovich.net)  
[www.thealhambra.net](http://www.thealhambra.net)